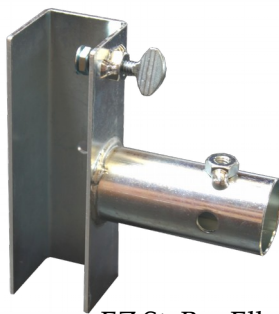


Lower Corner Stabilizer Bars for EZ-Up and other Pop-Up Canopies

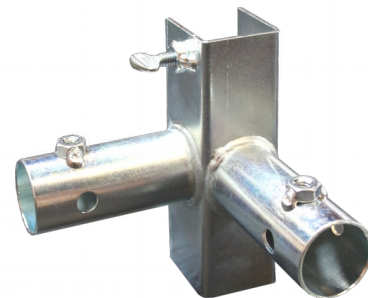
Instructions for Use

Parts List:

- (2) EZ StaBar Ell Joints EZ202
- (1) EZ StaBar 3 Way Joint EZ200
- (2) Male pole sections, 61" long
- (2) Female pole sections, 57" long
- (2) Ball Bungees for bundling poles
- (4) Thumbscrews – finger tighten only



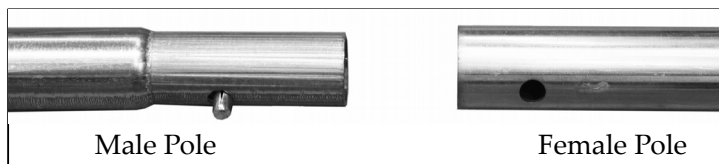
EZ StaBar Ell



EZ StaBar 3 Way

1. Set up canopy as usual. Slip EZ StaBar 3-Way Joints onto the bottom of one rear leg. Slip Ell Joints onto one front leg and one rear leg. Tighten thumbscrews until the joints are held in place against the legs. Finger tighten only – although the joint will flare slightly as you tighten, it is not necessary to apply great pressure when tightening.

2. Connect male pole sections to female pole sections by clicking together at center to form 2 StaBar poles.



3. Click StaBar poles into StaBar Joints at corners. You may need to adjust the position of the joints on the legs in order to keep StaBars level if you've shortened any of the canopy legs to compensate for uneven terrain. This should be done prior to inserting the StaBar poles.



EZ StaBar Ell

EZ StaBar 3 Way

EZ StaBar Ell